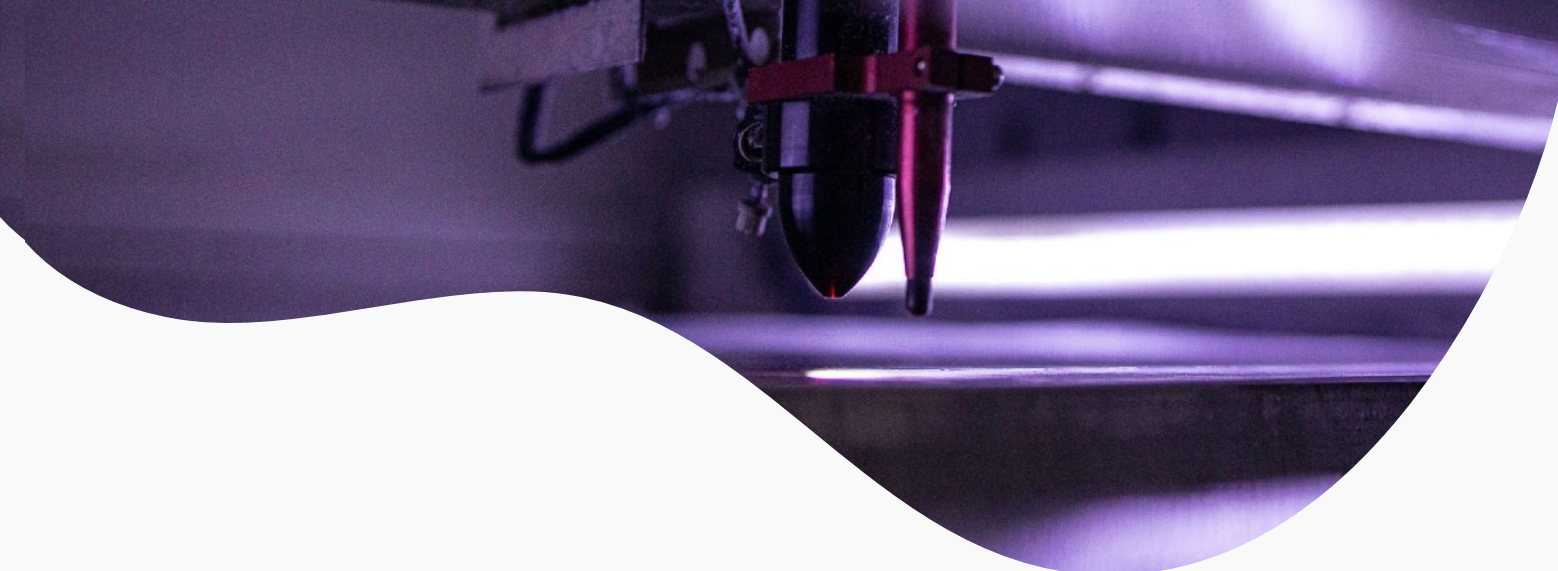


DRIVING **INNOVATION**  
**DELIVERING** SOLUTIONS  
EMPOWERING **THE WORLD'S**  
**LEADING** LEATHER GOODS MANUFACTURERS.



## **GROWTH AND SUCCESS**

PL PROJECT is a fast-growing company that innovates and utilises new technology. All our products are unique. We have six representatives in six countries, a vast staff of engineers who lead our technical breakthroughs, and over 2,000 m<sup>2</sup> of production and administrative facilities.

## **ENERGY EFFICIENCY**

Along with these new technologies, our machines have incredibly low energy usage, which has reached previously impossible levels.





## **RELIABILITY, QUALITY AND FLEXIBILITY**

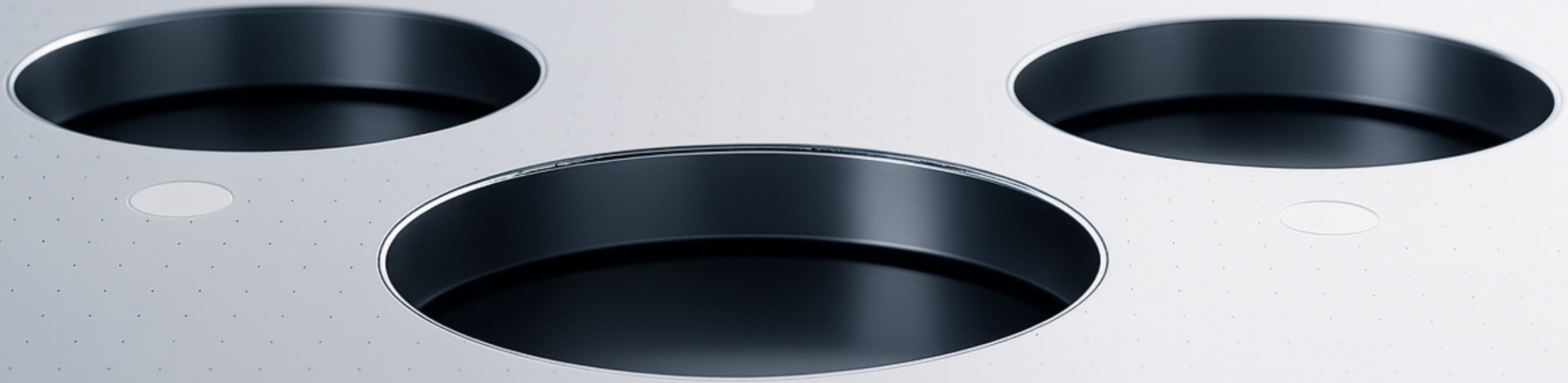
Guaranteed due to our in-house production of the individual components. Almost all machine components from our portfolio are manufactured in our production facility.

## **SERVICE AND CUSTOMER CARE**

Service and customer care are our key values. We endeavour to maintain the highest levels of service while pushing the boundaries of assistance.



# A LOOK INTO THE FUTURE



VACUUM MACHINE

# PL4100

Vacuum-assembly station for component moulding and assembly— designed to improve workflow efficiency, reduce resource usage, and save time.

## Projector

Projects outlines and templates onto material surfaces to assist with the precise and efficient assembly of components.



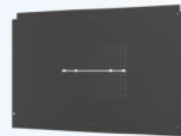
## 2D and 3D Molding

2D supports partial shaping of individual parts, and 3D allows full shaping and assembly of an entire bag.



## Zipp Mounting

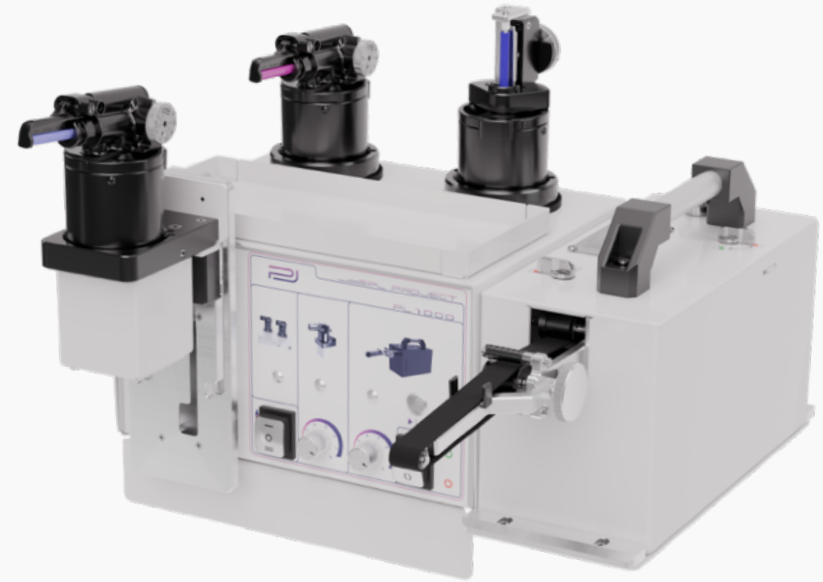
Provides precise zipper installation with vacuum assistance.



AUTOMATIC DYEING SYSTEM

# PL1000

This machine offers a compact design and multifunctionality, **combining several systems into one**—without compromising on performance or final results.



## FEATURES

### Painting heads

Up to **3 heads** running constantly, keeping the painting always ready.

### Cleaning module

Achieve the **perfect finish** to the dyeing process using only water.

### Compact size

At just 46 cm wide, it's one of the **most space-efficient** machines.

# MODULAR SYSTEM

The PL1000 machine is a combined system, allowing customers to **configure** the machine according to their specific needs.



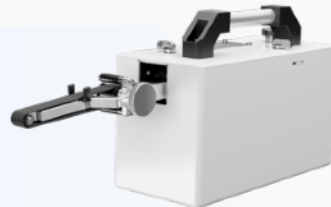
## Painting head

From 1 to 3 painting heads.



## Cleaning module

Clean any imperfections.



## Adjustable table

Electric height adjustment.



Example of **PL1000 - A** with three dyeing heads, a cleaning module and an adjustable table.

AUTOMATIC DYEING SYSTEM

# PL1200

This machine offers an ultra-compact design and multifunctionality, **combining several systems into one**—without compromising on performance or final results.



## FEATURES

### Painting heads

Up to **5 heads** running constantly, keeping the painting always ready.

### Cleaning module

Achieve the **perfect finish** to the dyeing process using only water.

### Compact size

At just 37 cm wide, it's our **most space-efficient** automatic dyeing system.

# MODULAR SYSTEM

The PL1200 machine is a combined system, allowing customers to **configure** the machine according to their specific needs.



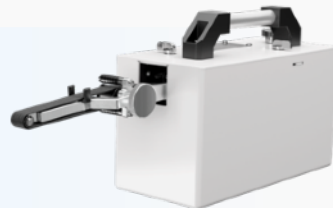
## Painting head

From 1 to 5 painting heads.



## Cleaning module

Clean any imperfections.



## Adjustable table

Electric height adjustment.



Example of **PL1200 - A** with three dyeing heads, a cleaning module and an adjustable table.



# BLUE PLANET LINE

The future runs on less



OUR MOST

# EFFICIENT LINE

Designed as a stand-alone unit, our machines allow manufacturers to organise their leather-edge dyeing workspace independently.



## USB Powered

A USB cable can also power each of the machines.



## Efficient

All BPL machines consume a minimum amount of energy.



## Compact

They are the smallest machines on the market.



## The challenge of Energy efficiency

Modern companies face the challenge of adopting low-power machines to reduce costs and minimise environmental impact.

Eng. Plamen Tzonev  
CEO



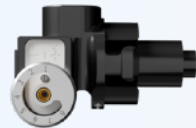
HANDHELD PAINTING MACHINE

# BPL1410

The machine's weight is only 400 grams with the tank empty. Its dimensions are 237mm in length, 75mm in width and 67mm in height.

## Regulator

for thickness up to 0.7 mm.



## Paint container

with a capacity of 35 ml.



## Speed control

of the rotation shaft



 **2W**  
energy consumption

SINGLE PAINTING MACHINE

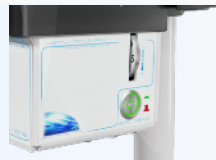
# BPL1310

Whether you're prototyping, testing colour finishes, or working in tight spaces, the BPL1310 delivers reliable results without the overhead of larger systems.

**Height adjustment**  
up to 200mm.




**Speed control**  
with 8 different levels



**Powered by**  
a power bank



 **3.5W**  
energy consumption

SUPPORT STATION WITH TWO HEADS

# BPL1320

Whether you're prototyping, testing colour finishes, or working in tight spaces, the BPL1320 delivers reliable results without the overhead of larger systems.



**Quick head change**  
with other PL machines.



**Independent heads**  
to maximise productivity.



**Powered by**  
a power bank



 **7W**  
energy consumption

WASHING MACHINE

# BPL1330

With low energy consumption and a built-in cleaning system, the BPL1330 supports smooth, uninterrupted dyeing—keeping your edges clean without added complexity.



## Cleaning belt

that removes excess dye.



## Powered by

a power bank.



 **15W**  
energy consumption

ADJUSTABLE ELECTRIC TABLE

# PL2000

This table is specifically designed to hold PL1000 and PL1200 machines while they are in operation. Its height can be adjusted from 800mm to 1200mm, and its load capacity is up to 50 kg.

**Control panel**  
for height adjustment.



**Locking wheels**  
for a stable workflow.



**Paint holder**  
just a hand's distance.



# EDGE REVOLUTION

Patented technology for cleaner lines, richer colour, perfect results on leather goods.

## Uninterrupted work

A cap and constant shaft rotation keep the paint from drying or evaporating.



## Exceptional precision

10-step paint control in 0.075 mm increments (0-0.75 mm range).



## Fast and easy cleaning

The painting head has only 8 parts, allowing fast and easy setup.



HORIZONTAL HEAD



VERTICAL HEAD

OUR MACHINE

# ACCESSORIES



\*Short version example

Long knurled shaft – 90mm  
Regular knurled shaft – 45mm

\*Model: 000012770030



\*Long version example

Long smooth shaft – 90mm  
Regular smooth shaft – 45mm

\*Model: 000012890020



Anti-drop container

\*Model: 000007900010



Power Supply Box



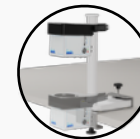
Additional lightning

\*Model: 000032850010



Drying Stand

\*Model: 000132080010



Base for BPL1310

\*Model: 000058570010



\*Technical specifications listed in this catalog are approximations, and images may vary.

PL PROJECT

# REPRESENTATIVES

## **Josma Maquinaria S.L. - Spain**

Phone: +34 965 386533 Email: [josma@josma.es](mailto:josma@josma.es)  
[www.josma.es](http://www.josma.es)

## **Tecmacal - Portugal**

Phone: +351 256 200 480 Email: [tecmacal@tecmacal.pt](mailto:tecmacal@tecmacal.pt)  
[www.tecmacal.pt](http://www.tecmacal.pt)

## **Campbell-Randall Machinery - United States**

Phone: +1 936 539 1400 Email: [dan@campbell-randall.com](mailto:dan@campbell-randall.com)  
[www.campbell-randall.com](http://www.campbell-randall.com)

## **Florence Tech S.r.l - Romania**

Phone: +40 369 805 888 Email: [info@florencetech.ro](mailto:info@florencetech.ro)  
[www.florencetech.ro](http://www.florencetech.ro)

## **Del Vecchia Group - Italy**

Phone: +39 55 8722 176 Email: [delvecchia@delvecchia.com](mailto:delvecchia@delvecchia.com)  
[www.delvecchiagroup.it](http://www.delvecchiagroup.it)

## **BFM Tools and Machines for Leather Goods - France**

Phone: +33 5633 44479 Email: [contact@bfmfrance.fr](mailto:contact@bfmfrance.fr)  
[www.bfmfrance.fr](http://www.bfmfrance.fr)

## **AC MAKİNE SAN. VE DIŞ TİC. LTD. ŞTİ. - Turkey**

Phone: +90 212 671 0093 Email: [info@acmakine.com](mailto:info@acmakine.com)  
[www.acmakine.com](http://www.acmakine.com)

## **Primewise Consulting - India**

Phone: +91 9999 149 100 Email: [contact@primewiseconsulting.com](mailto:contact@primewiseconsulting.com)  
[www.primewiseconsulting.com](http://www.primewiseconsulting.com)





**LEADING INNOVATOR IN MACHINERY** FOR  
LUXURY LEATHER GOODS

**Phone:** +359 899 906 933 **Email:** [sales@plproject.net](mailto:sales@plproject.net)  
[www.plproject.net](http://www.plproject.net)